



RICHMOND
YACHT CLUB

Plain Sailing

August 2013



Ingrid Visser talk at RYC! 30th August



From the Flag

The Club's 2013 AGM and prize giving was held in June – well attended and a great evening all round. Many thanks to all of you who braved a bit of winter chill to come along and contribute to the AGM and to celebrate the last year's winners. Congratulations to those who won races but mostly to everyone who raced and cruised during the year in support of the Club's activities.

I would like to thank the outgoing committee, the patrol crew, the tower crew and the office girl for their hard work over the last year (hope I have not missed anyone?). Thanks also to Trish for all the work she put in as Commodore over the last two years, I am sure will enjoy only having to sail now! Most of the past Committee has been re-elected so it is great to see continuity as well as a number of new members – thanks for putting your hands up to help.

I will leave you to read the Committee and on-the-water articles elsewhere in the magazine.

It is a fairly busy time of year for the committee, setting race calendars, pursuing sponsorship, organising races and events, keeping the assets in good shape and sailing somewhere in between. There are also pressures on development in Westhaven that the Committee is monitoring and making submissions to Council as necessary. If anyone has any concerns we urge you to make a personal submission, or to contact the Committee if you have any ideas or concerns. This will allow us to gauge members' sentiments.

The winter series is past the halfway mark and there has been some great racing (and one drifter of note!). Coming up is the SSANZ short-handed series and a lot of RYC boats will be competing – take care and don't break anything!

We are very grateful to our sponsors CRC, New World Victoria Park, New World Birkenhead, Victoria Cruising Club Trust, Salt Services, Events Clothing, Orams Marine Services, Harken/Fosters Ship Chandlery, Coolstore Construction, Safety at Sea, Mariner Marine Insurance, Volvo Penta, Burnsco, and Mount Gay rum. Please take every opportunity to support our sponsors and use their products and services and tell them you are a Richmond member.

See you on the water and back in the Club for after winter racing warmers!

John Davies
Commodore

Editor's Note



Isn't sailing a good time? From racing to cruising, sailing offers life-changing opportunities to everyone from kids to pensioners. It gives an outlet to go and enjoy life. I'm glad I belong to a club like Richmond that supports the *fun* aspects of the sport. In the past few months RYC has hosted sold out talks, games nights, and exhilarating racing! This season we'll put on our popular Friday Night series to introduce the next generation to the sport; as we say, care to join us?

And look, I made the front page of the largest sailing website in the world last month! - Bryon





Calendar

For the most up to date event information contact the RYC office.

August	4	Sun	RYC Winter Series Race 7
	10	Sat	SSANZ SIMRAD 100
	18	Sun	RYC Winter Series Race 8
	30	Fri	RYC Club Night (TBD)
September	1	Sun	RYC Winter Series Race 9—0930 start (final, prizegiving follows)
	7	Sat	SSANZ SIMRAD 50
	8	Sun	<i>America's Cup Race 1 & 2 (View at the Club!)</i>
	15	Sun	<i>America's Cup Race 9 & 10</i>
	21	Sat	Volvo Penta Spring Regatta / Gold Cup 1
	22	Sun	<i>America's Cup Race 17</i>
October	2	Wed	Wednesday Series Race 1
	10	Sat	Gold Cup 2 (RNZYS)
	13	Sun	Hauraki Singlehanded Series Race 1 (WBC)
	16	Wed	Wednesday Series Race 2
	25	Fri	Coastal Classic (NZMHYC)
	28	Mon	<i>Labour Day</i>
November	30	Wed	Wednesday Series Race 3
	3	Nov	Singlehanded Race / Hauraki Singlehanded Series Race 2 (RYC)
	11	Sat	Gold Cup 3 (RAYC)
	13	Wed	Wednesday Series Race 4
	22	Fri	<i>Emergency Services Regatta (hosted by RYC)</i>
	27	Wed	Wednesday Series Race 5
December	1	Sun	Hauraki Singlehanded Series Race 3 (BBYC)
	7	Sat	Gold Cup 4 (BBYC)
	11	Wed	Wednesday Series Race 6
	25	Wed	<i>Christmas</i>
	26	Thu	<i>Boxing Day</i>

Front cover: The RYC clubhouse has been at Westhaven since 1940. Rear cover: *Spearhead* is gearing up for the Round North Island and is looking goooooood...

2013-14 Victoria Friday Night Special

Our Victoria Friday Night Special series will commence on Friday 18th October 2013. We get a lot of repeat crew members wanting to join early so this is your notice –for those interested in re-joining the series please contact the office to book your place. Don't delay, we will soon start advertising externally and the spots usually fill up quickly!

Mandatory Lifejackets Bylaw in the Waikato (Is Auckland Next?)

The Waikato Regional Council recently adopted a new navigation safety bylaw. The key change is that it is now compulsory to wear a PFD (lifejacket) in vessels 6 metres or less while underway, in the Waikato Region. The area covered by Waikato Regional Council includes all of the Coromandel Peninsula and the Mercury Islands, Slipper Island etc. This means, amongst other things, that whenever you go ashore in your dinghy, in this area, you will need to be WEARING (not just carrying) a lifejacket. For any more information, please contact the Waikato Regional Council's Navigation Safety team on 0800 800 401. Following Waikato's lead, Auckland Council has recently conducted an online survey as part of a review of lifejacket regulations for the region.

America's Cup Breakfasts at RYC

The America's Cup is fast approaching. Sunday viewings, including the first races will be shown in the RYC clubrooms. It's in the morning (8am+) so we'll be putting the race on the two new big screens, cooking up breakfast on the BBQ (hey, it's summer somewhere!), and having a generally good time of it. Starts Sept 8th, watch the RYC website and facebook page for details.

RYC Membership and Sailpass Invoices and a Survey

Invoices for Membership are on their way in the mail and if members want to save over 50% on their race fees this year please add the purchase of an Annual Sailpass for \$220 to the total. This includes all of RYC's sailing events, paid in one go. We are also including a short member survey to keep our books current.

RYC Member John Waugh Raising Money for Cancer Research

A few years ago John's father died well before his time of cancer, a story that is far too common. Now John is aiming to raise \$2,500 as part of his participation in the "Ride to Conquer Cancer." If you would like to sponsor John please go to the website below where you can read about the 'Ride to Conquer Cancer' and make a donation. (This link will send you to John's donation page: <http://goo.gl/gFE70N>)

Ingrid Visser - the Woman Who Swims with Killer Whales

RYC is excited to host a talk by marine biologist Ingrid Visser. Ingrid is the founder of the Orca Research Trust based at Tutukaka and has devoted her life to studying and advocating for orca, also known as killer whales. Ingrid has a genuine love for her subject and it comes through when she shares her exciting research and adventures with the public.

With a PhD specialisation in orca whales, Ingrid has travelled the world assisting in projects and campaigning for these magnificent mammals. Her work includes television shows and other media and she has written a book "Swimming with Orca: to share her knowledge about these mammals. Richmond YC have asked Ingrid to talk about the wonders of working with orca and to help us learn more about these fascinating creatures and what she is trying to achieve through her work with the Orca Research Trust.



Date: 30th August 2013

Time: Dinner at 6pm, Ingrid's presentation 7.00pm

Venue: Richmond Yacht Club, Westhaven Seawall

Cost: Donation at the door \$5pp to Orca Research Trust, Dinner \$25pp

Please RSVP to RYC for meals!

PredictWind Race Tracking of Richmond Winter Races

We have been trialling the PredictWind race tracker service for the winter series races. The service works by tracking your GPS-enabled smart phone (iPhone or Android) during races. The results are plotted in real time and can be viewed after to analyse the race. It

should be obvious that this gets more fun the more people use it so spread the word. To participate you will need to go to the predict wind tracker site:



<http://www.predictwind.com/tracker/>

and follow their instructions for setting up your phone for tracking. Only one phone per boat! It's free to view races but to send data you'll be asked in the app to subscribe (US\$3 per year paid to PredictWind). Other clubs are also using this service so your subscription should go a long way over the year.

The RYC winter series races are already set up:

<http://forecast.predictwind.com/tracking/race/ryc>

We hope you enjoy the race tracker this winter — please send us your comments and suggestions as the series progresses with the caveat that technical requests and/or problems should be sent to PredictWind directly. If there is enough support RYC will add the remainder the 2013-14 racing calendar to the tracking program. Thus far the uptake has been minimal — if you would like to see this service for future RYC racing be sure to let us know.



Custom Crew Apparel from RYC sponsor Events Clothing

Summer is just around the corner so how about some new sailing gear? RYC has teamed up with our sponsor Event Clothing (to offer a range of RYC-branded gear for club members to buy at a reasonable price.

There is a link on our website showing the products available with RYC logos. Simply click on the link to the order form, select items, sizes & colours and choose your delivery and payment method. Then email to Glenda to process the order via the club and items will be delivered direct to your preferred address.



Events Clothing can also do custom embroidery for less than you would expect. Fancy your boat name and logo on crew jerseys? Events can do that. They'll even add the RYC logo if you wish to show your club pride. For crew embroidery contact Emma at Events Clothing directly emma@eventsclothing.co.nz

Events Clothing kindly support the club prizegivings with vouchers to be used at their outlet store in Morningside. Some of the popular brands they have in the store are Line 7 & Musto. Prices range from \$10 tees to offshore wet weather gear at \$350. Vouchers can only used at the outlet store.

The Events Clothing outlet is open Monday to Friday 9am to 5pm. Their shop is located out back of the main office at 16 Taylor Street, Morningside. More details are online at www.eventsclothing.co.nz.



Richmond YC May Club Night - Precious Cargo

For our May club night RYC had the pleasure of hosting James and Somira from *Anasazi Racing*. Over 80 club members and friends listened to a fascinating and inspiring presentation on James and Somira's family adventures. This included the second voyage in their Open 40 race boat, *Anasazi Girl*, with their 2 small children Tormentina and Raivo (now aged 4 and 2).



James discussed their philosophy of wanting to give their children the gift of the sea and human connections in the major ports of the world. They want to put things in front of their children to give them a broad experience right from the start, and aren't held back by the conventions that affect many parents.

This attitude led to a trip with the children 2000km across Patagonia on bikes, living on \$12 a day, and a canoe trip down a very remote 400km stretch of the *Rio Santa Cruz* in Argentina. The family then set sail in *Anasazi Girl* from USA to France, and then down to Cape Town. They traversed the southern ocean to Melbourne and continued on to New Zealand. They arrived in Auckland only a month before little baby Pearl was born.

Tormentina also contributed to the presentation, giving her views of the southern ocean and some of the amazing sights she has seen.

RYC would like to thank James and Somira for sharing their story with us, and their sponsors for the generous door prizes. Anyone interested in following the adventures of *Anasazi Girl* can go to: <https://anasaziracing.blogspot.co.nz>





A Lack of Wind?

Where is the wind?

The weather over the Fall and early Winter has been particularly mild. While this is great for life in general, sailors obviously appreciate a bit more wind.

As a result RYC has had to shorten several races and boats with a Code 0's have been "flying" around the course at 4 knots, 2 knots better than the rest!

The glassy conditions had the editor wondering if the weather has is out for RYC's race calendar, so I asked Georgina Griffiths, a RYC member who is also a meteorologist, to comment on the trend:

"The recent spate of light winds for RYC racing has caused some debate - is something going on with our weather patterns lately, or have we just been a bit unlucky?"

It seems to be a bit of both.

New Zealand weather has been more settled than usual over the last month, with the barometer reading a lot higher than it typically should for deepest, darkest winter! With the relatively high frequency of High pressure systems in our vicinity, Auckland has experienced a lot of southeasterly winds. This is highly unusual at this time of year, when we would expect windy westerlies, and good racing conditions, on average. The problem with southeasterlies is that it just doesn't blow in the Waitemata harbour/inner Gulf - there is a real "hole" in the lee area (the harbour) and yet there is often much more wind north of Kawau and through Colville Channel.

And we've been a bit unlucky, too, with the dying southerlies/southeasterlies seemingly timed for the weekend.

The only good news is that spring will start to kick in at some stage over the next 4-6 weeks, as we move towards September - and we all know what that means. Yep, you guessed it - stiff southwesterlies and reefing the main...."

Thanks George—can't wait for the breeze to fill in for the Spring Regatta!

(Disclaimer—the event is being reported on by the ed, who was an active participant on the night, for some reason details are fuzzy...)

RYC hosted a fun and games night on July 26th. The event was well attended, with somewhere between 5 and 7 teams competing in a quiz and in games of skill that were closer to games of chance as the evening wore on.

The quiz was very good—with a ton of custom photos from boats of all stripes (can you identify a Townsen 32 from an interior shot?), locations far and wide in the Hauraki Gulf (what bay is this?), and obscure trivia on things we've all forgotten (such as when do you fother? - the answer is *not* "when your wofe is ready")

Victory in the quiz went to Tony Evan's crew "Team L Plates." (*I have no idea what this refers to and I was on the team! - ed.*) The victor took home the highly esteemed Waitemata Yacht Squadron's Ray's Safety Award trophy, a bottle of wine for each member, and the burden of creating next year's quiz. Congrats Tony!



The skills events varied from the very respectable game of "plastic ball bowling" to the staid pastime of "paper fish-ing." With enough enthusiasm and careful bending of the rules one could manage to catch well over their limit in paper kingies!

The winner of the skills event is long lost to a lack of memory—however a generous pile of swag was theirs for the taking. Thanks to the Marauders Association for putting on a very enjoyable event.

Now, to remember that "rule of twelfths" thingy for next year...



2013 AGM

The 2013 AGM and prizegiving was held on Friday, June 28th. The AGM was well attended and the overwhelming sentiment was one of support for the good work done by the club in the past year.

The committee was able to report a number of successes in the year, including: a strong committee, a new website, a successful conclusion to the rent review process, the establishment of an active Facebook page, the successful hosting of a strong racing program including our long-running and successful Wednesday night racing, strengthening of the Friday Night Special series, the introduction of a new interclub singlehanded race series, another successful small boats regatta, and the best attended Route 66 in recent memory.

The membership of RYC grew in 2012-13 and we made a small profit on the year while constantly improving the clubhouse. Good work done by the club captain Andrew Burr and others includes the installation of a new audio visual system and improvements to the club lighting.

Challenges to the club were also presented—these including how to sustain and improve our club activities by solidifying sponsorship support and the challenges that the club will face as Auckland's waterfront plans are implemented.

During the meeting Trish Lewis became our latest ex-commodore and John Davies became our newest commodore. Bryon Wright stepped into the role of vice-commodore and Andrew Burr adds the role of rear-commodore to his on going role as club captain. Vera Mummery will remain in her long standing role as club president

Several new members to the committee were welcomed. These included Alan Abram and Mark Becroft—both active Marauders owners, Linda de Vine—who started at RYC in the Friday Night series, Tony Evans—whom you should ask about catching fish on the Westhaven wharfs as his dad raced in early RYC events, Bill Farmer—longstanding crew on *Echelon* and others, and Gareth Wells—who returns to the committee after a few years sailing *Wandering Star* to Oz and back.



Every year RYC members compete for placings in races, in series, and for special trophies given out to outstanding members of the club. For the complete listing of race winners please see the RYC website, below are the major prize winners for 2013:

Blake Memorial Shield

(for outstanding committee work)



Evelien van Vliet

Maurice Livingston Memorial Trophy

(for "going the extra mile")



Gareth Wells (*Wandering Star*)

Centennial Trophy

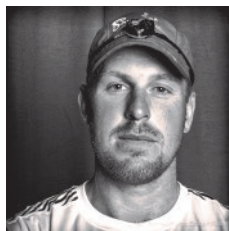
(for participating in the most races)



Ken Kok (*Sex on Fire*)

Alan Wright Trophy

(for showing determination)



David Swete (*Royale, Team Sanya*)

Club Champion—the Noel Cole trophy



John Davies (*Crocodile*)



A Word on Handicaps

(Handicapping is both a brilliant way to make mixed fleet racing possible and a source of constant angst for racers and organisers alike. However, the process is widely used and the editor, who is often on the receiving end of handicap “comments”, thought it would be a good idea to have the RYC handicappers — who will remain anonymous — write up a short description of the basics of handicapping, RYC-style. This is their submission.—Ed.)

Handicaps are used in mixed fleet racing to equalise the performance of dissimilar boats racing against one another, much like golf handicapping. So a boat's actual time taken to sail the course (elapsed time) is multiplied by the handicap (or time correction factor TCF) which gives us the corrected time.

Faster boats will have higher handicaps than slower boats so that when their respective elapsed race times are adjusted by their handicaps they should theoretically end up with the same corrected times, all boats in a fleet should have exactly the same handicap-adjusted times. Basic example is a 12 metre boat will have a higher handicap than an 8 metre boat, because generally the 8 metre boat will take longer to sail the course than a 12 metre boat. In a modern fleet of course there are now 8 metre boats more than capable of beating a 12 metre boat – just another variable the handicapper must add into the mix.

There are as many philosophies about how handicaps should work and be applied as there are variables out on the water. Richmond's philosophy includes the combined boat and crew performance, rather than the boat's optimum capability for example.

At Richmond we use a software system that not only reports our results but also updates handicaps race by race. This is based on a boat's performance “sailed to value” against the other boats in the same division, on that date, in the conditions that prevail on that day. Other Auckland clubs, but not all, use the same software.

Initial series handicaps are applied to boats based on a number of factors, including PHRF (either the boat's own or similar), local knowledge of the boat and where it would slot into the current handicap spread in the division (expected performance relative to similar boats). This applies to new entrants and those that change divisions.

Traditional handicapping was based around the fastest (scratch) boat with slower boats being granted a percentage of its time on top of its actual time and if the slower boat came in within this allocated time, it was deemed to have beaten the scratch boat on handicap.

We are now a lot more sophisticated and use a 'reference boat' where the sailed-to value is calculated as the handicap other boats would have needed to place first equal with the reference boat. In this method, the reference boat should be the boat that placed near the middle of the fleet. Some argue it should be the middle boat. Some argue it should be the boat placed around 45 - 48% in the fleet. 30% (ie the boat placed about 1/3 down the fleet) is definitely too high, causing a downward trend in all handicaps. Whether it's 30% or 48% makes no material difference to the argument that one boat gets stuck as the reference boat - in something like 14 races with a fleet of around 15-20 boats, 8 boats were the reference boat once or twice.

We can average the last 1 to 5 (ie you choose if you want 1, 2, 3, 4, or 5) races' "sailed-to" values to get the updated handicap. We can configure it to include the handicap for the last race in the average (so last 4 race sailed-to values and the last tcf = average of 5 values). Also, we can set "clamp" limits so if a boat has a very good or bad sailed-to performance (spikes) the adjustment will be limited - this prevents abnormal (good or bad races) performances causing wild swings in the handicap. You can make it exclude altogether those performances that are really shocking or blindingly good.

For interest, we also provide PHRF results where applicable. We also keep each major series' handicapping completely separate from each other. That means for instance, that Wednesday Night racing results will not influence Winter Series results. This is because the divisional split in each series is different. Results from the end of a previous series are used in the rolling average for the next series to retain a 5-race average.

Handicaps are arbitrary by nature and factors the handicapper has no knowledge of are not considered in the setting of the TCF. These might be that a boat might have started late, run aground, had to do a penalty or penalties etc. Different skippers/crew can also affect results.

If we can minimise the difference between the first and last boat on corrected time then the handicaps are working well. Perfect handicapping in a perfect race should end up in all boats winning.

(There you have it. And might I add while I have the space that the handicappers are a lovely bunch, top-shelf all, and people I would consider at the leading edge of potential generosity to smallish, but not too-smallish, Ross-designed vessels, etc etc.—Ed.)



Winter Series Report

Race 1 was a lovely day but with a dying breeze, the patrol boat had a slight gear failure so Knighthawk was pressed into service as the finish boat.

Race 2 had a more consistent wind and we had a good finish off the tower.

Race 3 was the most frustrating day wind wise as the wind dropped out, and then further after we had set the shortened course mark.

Races 4 & 5 both finished off the tower, with Race 5 having the most consistent wind we have had all winter. Good off the wind start and a very good beat back up the harbour.

For all races we have been averaging around 35 boats, an improvement on last years fleet sizes. So thanks for coming along and for those of you who haven't tried it winter racing can be some of the best sailing we have on the harbour.

Thanks must go to the patrol boat crew for attending each Sunday no matter what and to the tower crew.

Especially pleasing is the attendance back at the club after racing, to socialise and exchange stories long and short!!! (Margaret)



Kevin Murphy 021 837-972

2013 SSANZ SIMRAD 60—Revolution Blues Race Report

SSANZ decided to try something different by mixing up the order of their popular three race winter two-handed series. So this year the “60” was first, the “100” is second, and the finale is the shortest race, the “50”. They claim it was to avoid having sailors out rounding Little Barrier Island during the first America’s Cup race, which we can presume the Kiwis will be trouncing the Americans in anyway, so who cares? Well, some also conjectured that perhaps SSANZ wants to inject a little “harden up” into the order by making the 100 a mandatory stop for series hopefuls. Good on ‘em, I say!

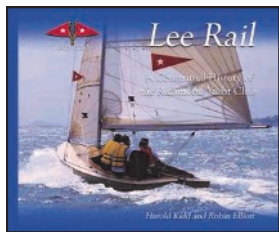
I’m avoiding the race start description for reasons highlighted on page 3. Let’s just say I finally got started. Winds were light and those with Code 0’s were making good ground around Brown’s Island Beacon and along Tamaki Straight. We tried any number of reaching kite configurations and found one that kept boatspeed registering on the log. My crew was soon sent down below to watch a movie on the new A/V system (aren’t tablet PCs wonderful?). I gybed the boat, changed the sails twice and had a nap before I realised she was also napping the whole time.

The breeze finally started filling in while the fleet was compressed in the Waiheke Channel. The boats that got into the new breeze first did well, while we were spending time catching little puffs and slowly working our way around larger boats that could not use the puffs as well. The reach and beat back was routine with no real surprises as we watched the big boats slowly disappear. Not a good result for Revolution Blues, but a great day on the water! (Bryon)









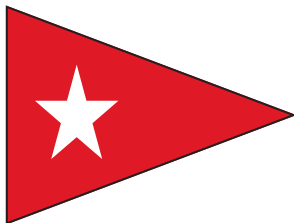
Lee Rail

We're over 100 years young! The rich centennial history of Richmond Yacht Club is told by Harold Kidd and Robin Elliot in *Lee Rail*. Copies are available from the office for \$35.



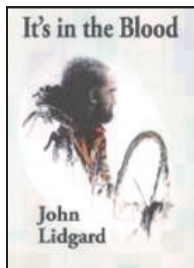
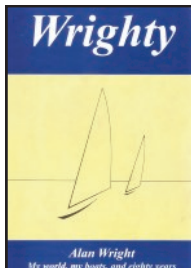
Current ISAF RRS Handbook

The 2013-2016 ISAF racing rules handbook is now available from the office for \$25. A digital copy of the new version is available on the ISAF website as well as an iPhone app for those that want to ruin their phone during the next protest on the water...



RYC Burgees

Do you fly the club burgee? What's a burgee you say? Well, you can learn by heading down to the office with \$20. Don't be left out, RYC burgees are worn by discerning and shapely yachts the gulf over..



Wrighty and It's in the Blood

The RYC clubhouse has signed copies of these books by great NZ designers Alan Wright and John Lidgard in stock. If you own a Wright or Lidgard design it's a must; if you don't, well, it's still a must. Either for \$40, both for the low price of \$80. Limited stocks.

Welcome to Our New Members:

Andrew Hall	General	Unitec II	Elliott 8.5
Mark Becroft	General	Maggie May	Marauder
Richard and Jane Coon	Assoc. Family	Seawalker	Hanse 400e
Sean and Barbara Wright	General Family	Mercenary	SR26
Simon Meiklejohn	General	Siskin	Reactor
Elizabeth Coon	Crew		
Elizabeth Campbell	Crew		

Free RYC Stickers

The club has had a batch of RYC bumper stickers made. These are free for Richmond YC members and supporters. We've also got RYC decals for the transom of your yacht, also free for Richmond YC members. If you would like a bumper sticker for your car, or a decal for your boat please see Glenda in the office.

RYC on Facebook

RYC has an active Facebook page—this is a popular way for members to interact and for the club to update you on racing and social events. We wish to invite you to join us and "like" the RYC Facebook page, to send in photos, short stories, blurbs and short updates of your sailing. Over 200 likes and growing!



www.facebook.com/RichmondYachtClub

Handbooks

The 2013-14 season handbooks will be sent to members before the Spring Regatta. For those that would like a mint copy of the last two years' handbooks for your archive, we have a few copies at the club. First come first served while stocks last.

Racing Flags

Division flags of all colours are available from the office at no charge to members.

For Sale: Infiltrator, Whiting Quarter Tonner, \$14,000 ONO



Infiltrator is a well known Whiting 26 – ¼ ton, based on the MK.II "Magic Bus". RYC members have owned her since January 2010 and she has rewarded them with many hours of fun sailing and lots of fantastic results. Being cheap to own and race, Infiltrator would be great for a small syndicate.

If you want to start harvesting the silverware, this is a great platform to start from. A lot of time and effort has been spent maintaining and improving her. There is not much left to do on this little boat other than on-going routine maintenance. Open to any serious offers as the current owners are moving on to a new challenge. For a full description check out the Trademe Listing # [620922172](#).

Jokes

Two people are out sailing when suddenly a hand appears in the sea. "What's this?" asked the skipper, "It looks as if someone is drowning!" "No," explained his crew, "It's just a little wave."

Nervous first timer to skipper. "Do yachts like this sink very often?" "No, usually it's only once!" (exception: Pied Pipers! - ed.)

How much did the pirate pay for his peg-leg and hook? An arm and a leg...

What did the blown out, ripped jib say? "I haven't a clew."

What vibrates and sits on the bottom of the ocean? A nervous wreck

Ovlov Marine Ltd

New Zealand's largest Volvo Penta Dealer



Club Information



Officers

President	Vera Mummery	Nevenka
Commodore	John Davies	Crocodile
Vice Commodore	Bryon Wright	Revolution Blues
Rear Commodore	Andrew Burr	
Treasurer	Audrey Cole	
Secretary	Margaret Harvey	Knighthawk
Club Manager	Tim Smedley	
Building Manager	Andrew Burr	

General Committee

Alan Abram	Eyelure
Mark Becroft	Maggie May
Fleur Cox	
Linda de Vine	
Tony Evans	Grenada
Bill Farmer	
Hayden Griffiths	Latitude
Rodney Janes	Peppermint Planet
Jono Lind	Carpe Diem
Hans Swete	Transformer
Evelien van Vliet	
Gareth Wells	Wandering Star

Office

Glenda Bennett
(Office hours: Tues-Fri 10am-3pm)

Contact

Richmond Yacht Club, Inc.
Westhaven Seawall
PO Box 46324, Herne Bay
Auckland
New Zealand
Phone: +64 9 376 4332
Fax: +64 9 360 2379

Email: info@richmondyc.org.nz

Web: www.richmondyc.org.nz

Facebook: <http://www.facebook.com/RichmondYachtClub>

Magazine

We want to share your stories! To submit news, stories or photos to Plain Sailing email us at: magazine@richmondyc.org.nz

Note that those wishing to point out errors in the Plain Sailing are encouraged to do so, but that this automatically volunteers you to contribute a story for the next addition.

Classifieds will be placed when requested—free for members!



Sender:
Richmond Yacht Club, Inc.
PO Box 46-324
Herne Bay
Auckland 1147

Our generous sponsors:



NEW WORLD

Victoria Park

Birkenhead



SALT
SEA AND LAND TRADE SERVICES

