



---

**RICHMOND  
YACHT CLUB**

# Plain Sailing

**February 2014**



# FROM THE FLAG

---

The last Flag started with “It’s already November...” and now “It’s already 2014”. A different lead-in definitely required! Nonetheless, I trust you all had a break, enjoyed the festive season and are ready to sail into 2014, both literally and figuratively.

Business confidence is up so let’s get out sailing and making the most of the greatest sailing waters in the world.

We are halfway through our Wednesday Night Series and the Friday Night Special learn to race/sail series. The Friday Night Specials have been really well supported – well done to the crews and skippers.

The Destination Series is gearing up so please join us for an island race and social over the next few months. There are a lot of other races too: from the Single-Handed Series, Route 66 and Auckland Anniversary Regatta, Bay Of Islands Race Week and Auckland Week, so busy times ahead.

Socially we have had good turnouts at the club after racing, Christmas dinner and the kiddies’ Christmas party (very noisy – must have been a rave). RYC also hosted the crew.org.nz end-of-year rum race, which had a great turnout and earned us much needed income.

The Committee is liaising with adjacent club managements regarding development in Westhaven and making submissions to Council and Waterfront Auckland as necessary. The pedestrian link on Westhaven Drive is under construction as a first phase project. If anyone has any concerns we urge you to make a personal submission, or to contact the Committee if you have any ideas or concerns.

We are very grateful to our sponsors CRC, New World Victoria Park, New World Birkenhead, Victoria Cruising Club Trust, Events Clothing, Orams Marine Services, Harken/Fosters Ship Chandlery, Coolstore Construction, Floating Dock Services, Burnsco, and Mount Gay rum. Please take every opportunity to support them and use their products and services and tell them you are a Richmond member.

Finally, I would like to thank the racing, social, bar and Committee volunteers for all the hard work. We also farewelled Glenda after eight years – thank you for your great service and passion for the club, and all the best in your future endeavours.

# FROM THE FLAG: CONTINUED

---

See you on the water and back in the Club for after racing warmers!

Enjoy the holidays and on behalf of the Committee we wish you all the best for 2014.

John Davies  
Commodore



## Editor's note

Ahoy there - and greetings from your new magazine Editor.

The Wednesday Night Racers will know me as the owner of Elliott 7.9 *FX*. I've owned her for nearly 9 years, but started racing with Richmond Yacht Club a year earlier when I owned my first boat, Raven 26 *Refund*. (Same sized boat; one's just a bit faster than the other. In the Raven it was an achievement to actually get a result in a race that wasn't a DNF!)

As well as racing, I enjoy cruising: the pic on the front cover is of *FX* at anchor at Te Kouma earlier this year. As your magazine Editor you'll get a mix of racing content, cruising stories, and general all-round nautical stuff.

This is very much your magazine, so I'd love to make it all about *you*! Please send me your stories, photos and any other bits and bobs you'd like to see in Plain Sailing. Just email me at: [magazine@richmondyc.org.nz](mailto:magazine@richmondyc.org.nz)

Finally, a big thank-you to Bryon for a great handover of the magazine, and for all his hard work as the previous Editor. He has very big shoes for me to fill!

Happy sailing,

Cornelia Luethi, Plain Sailing Editor



**Cornelia Luethi with *FX* crew member, Minnie the dog.**  
(Yes, the dog races with RYC too - she snoozes down below till the chippies come out!)

# CALENDAR

---

For the most up-to-date event information, contact the RYC office.

February	2-3	Sat-Su	HSS Race 4-5 (BBYC)
	7	Fri	Destination Series Race 4 (Kawau)
	12	Wed	Wednesday Night Series Race 9
	14	Fri	Victoria Friday Night Special Race 6
	23	Sun	His 'n' Hers II (with PCC)
	26	Wed	Wednesday Night Series Race 10
	28	Fri	Victoria Friday Night Special Race 7
March	1	Sat	Destination Series Race 5 (Inner Gulf)
	7	Fri	Hauraki Singlehanded Series Race 6 (RYC)
	7	Fri	RYC Route 66
	12	Wed	Wednesday Night Series Race 11
	14-16	Fri-Sun	2-Handed, 3-Legged Race (PYBC)
	21	Fri	Victoria Friday Night Special Race 8 (final)
	26	Wed	Wednesday Night Series Race 12 (final)
April	28	Fri	Destination Series Race 6 (Waiheke/Te Kouma)
	5	Sat	Emergency Services Regatta (RYC hosts)
	5	Sat	Destination Series Race 7 (Inner Gulf, final)
	12	Sat	Hauraki Singlehanded Series Race 7 (DYC)
	13	Sun	RYC Closing Day Regatta
May	18	Fri	Auckland-Tauranga Race
May	11	Sun	Winter Series Race 1
	25	Sun	Winter Series Race 2
June			
	8	Sun	Winter Series Race 3
June	22	Sun	Winter Series Race 4
July			
	6	Sun	Winter Series Race 5
July	20	Sun	Winter Series Race 6

**COVER PHOTOS:** Front cover: FX anchored in Te Kouma harbour (photo: Cornelia Luethi). Back cover: *Crocodile* and *Faster Coyote* in the Richmond Wednesday Night Race on 15 January 2014 (photo: Matthias Luethi).

## Welcome to our new crew members:

Neville and Fiona Freeman.

## RYC Office

At present we have a temporary office administrator filling in until a permanent administrator is appointed. Dave Wind has been helping out since December so pop in if you are near the Club and make sure he is not sleeping! Dave is there to help and we are sure he will soon be a fellow sailor.

## H28 Yachts Promotion Day

Saturday 15th February 2014 from 10am to 3pm at Viaduct Harbour (in front of Emirates Team NZ base). View H28 yachts and ask the owners questions. All are welcome! For more info: Contact Bob on 09 9639507 or 021 273 5240 or [infor@h28.org.nz](mailto:infor@h28.org.nz). Website: <http://h28.org.nz>

## SSANZ Round North Island Race

*Wandering Star* will be representing RYC in the 2014 SSANZ Round North Island Two Handed Race - a race that runs every three years. Starting on the 8th February 2014, the entries are limited to 30 boats with stopovers at Mangonui, Wellington and Napier.

## RYC Beach Cleanup

This will be on 5th April after the Destination Series race. The aim is to clean up Islington Bay. More details will be in the RYC weekly emails soon.

## Sponsorship

Through the Bayleys in Clubs sponsorship programme, any member who is selling their property and lists it and sells it with Bayleys, Richmond Yacht Club will receive a \$1,000 donation. Linda de Vine is the contact for this promotion and she can be contacted on 021 923 276. (Bayleys Real Estate Limited, Takapuna; Licensed under the REA Act 2008.)



**Thanks to all of our great sponsors that help us put on our racing!**





# RACE REPORTS

---



***Unitech II* approaching White Island (Photo: Bryon Wright)**

## **White Island Race**

Three Richmond boats competed in RAYC's White Island Race in November 2013: *Mercenary*, *Unitech II*, and *Wandering Star*. Here's a pic of *Unitech II* approaching White Island. Little black puffs would erupt from White Island every so often, but not for when I had my camera out, of course. We did sail through a pumice raft and a foam field, but that was after the sun had set. Incredible to do this race, well worth the 200+ miles of upwind! Best memory was of sailing a tight reach past the Alderman's and being joined by 25+ dolphins, worst was seeing the disappointment on Andy's face when I reported that all three coffee systems had failed! (Bryon)

## **Wednesday Night Racing**

The first race of 2014 saw 53 boats on the start line (despite it still being cruising season), 10-14 knots of breeze and mostly blue skies. The following race (race 8) saw 74 starters and about 14-18 knots of wind. Competition was hot in many divisions with close racing on both line and handicap: in Division D the first three boats all crossed the line within 19 seconds of each other. And now that another Elliott 770 is racing (*Faster Coyote*), there's some extra competition for *Crocodile*. Most divisions have very close results on points for the series on handicap, so anything can happen yet! (Cornelia)



**The first Wednesday Night Race of 2014: a blue boat (*Patere*), blue sky and blue sea. (Check out the online version of Plain Sailing to see the colours!)**

# RACE REPORTS

## Destination Race to Mahurangi

Haven't done a Destination Race recently? Here's what you're missing out on...



Great weekend and a sleigh ride coming home on Sunday. 9+ knots surfing the waves for 2 hrs... ye ha. (Tony Evans)

## His 'n' Hers Race

His and Hers Race 1 with PCC, 21 boats in quite light conditions to start. Fortunately the wind filled in so all boats finished in good time. Let's see if we can increase the number of boats in the next His 'n' Hers hosted by PCC. (Margaret)

## Flap Martinengo Memorial

Flap Martinengo Memorial Round Rangitoto race had 8 entries in very blustery conditions, boats finished quite early although 2 DNF due to damage. (Margaret)



# THE FUTURE OF WESTHAVEN

---

*Waterfront Auckland sent RYC this response to last month's letter from the Westhaven Marina User's Association (WMUA). The views expressed here do not necessarily represent those of RYC or of the RYC Committee - Ed.*

In the November issue of your magazine, Trevor Dunn of the Westhaven Marina Users Association contributed his views on the impact from the developments proposed under the Westhaven Plan, on day to day use of the Marina.

Trevor in particular is concerned about carparking. We are all concerned about carparking: the reality is that we are operating one of the biggest marinas in the world, in the CBD of a big and growing city, and that there is pressure on space.

Until now, the Marina has operated - except for during absolute peak times - with a surplus of parking. As an indication, in normal times 0.3 carparks are used per berth holder, which goes up to 0.5 carparks per berth holder at busy times. We are required to have 0.8 car parks per berth designated for berth holders (i.e. as yellow spaces). When all of the developments are complete, there will in fact be, including parking allocations for non-berth holder activities, 322 extra carparks - in the marina. We can't promise these will always be available right next to your pier head, but we are confident that carparking will generally be available within close walking distance, and our aerial photography records (pictured) demonstrate this.

The challenge therefore is to ensure that those carparks are available to berth holders, and their crews, when they need them, and the mechanisms that we have to ensure this include yellow zones, parking permits, time restrictions, ticketing and towing, and we are also soon trialling Traffic Eye, an automated license plate recognition system, which will be more flexible and user-friendly than the existing system.

As for Trevor's comments on what he calls Cycle Routes, suffice to say it is very unlikely the Westhaven walkway and cycleway will transform the area as much as is being suggested by the Association. The surfaces will not be conducive to riding 'at speed' and it is foreseen that commuters and faster cyclists, will continue to use Westhaven Drive, with the Promenade being more focused on Marina users, walkers, families and the like. We fully recognise Westhaven is first and foremost for boaties and projects like this one are simply aimed at opening up more of the fantastic public spaces we have available around the Marina.

In conclusion, I think that Trevor agrees with us that overall, the Westhaven Plan



# FROM WATERFRONT AUCKLAND

---

is an initiative that could be very good for sailing: it preserves a way of life that yachties have loved for decades, and it opens up the space in a way that is going to draw more people into the area. Those people are going to be keen to get out on the water - clubs like Richmond will need to be ready to welcome them and to cater to their requirements. If we give them a good experience, many of these people might just become boat owners and club members.

If you do have concerns about any of the aspects of marina management that WMUA has raised, please visit [www.westhaven.co.nz](http://www.westhaven.co.nz), click 'the future' and download our summarised annual report, which outlines the Marina's ownership structure, the strategic vision for Westhaven Marina, and highlights the Marina's wins in the last year or so - from moving the security team inhouse, to careful management of OPEX budgets, to strategies for pier refurbishment, activation of Z Pier, nurturing the welfare of our sport, and much more. While you are there, sign up for our email newsletter. This will mean you are up to date on the latest developments and plans for Westhaven. We have recognised the importance of communication and we are rebuilding our website, using the sailing website Crew.org.nz to hear and respond to your feedback, and we will soon be doing the same with Facebook.

We think you will see that we take our custodianship of Westhaven - and your rights as berth holders - very seriously, and that we are endeavouring to nurture a marina that will look after the interests not only this generation, but our kids, grandchildren and even their children.

Yours sincerely,

Tom Warren  
General Manager Marinas  
Waterfront Auckland



**Sample aerial shots of Westhaven carpark - used for research and data collecting.**

# CRUISING REPORTS

---



## Bored kids make raft

Nicola Walkley Jeffery posted this fab photo of 'bored kids raft making' on the RYC Facebook page... looks pretty ingenious!

(You can find the RYC Facebook page at: <https://www.facebook.com/RichmondYachtClub>)

## The Commodore's BIG trip to Putiki Bay!

Started off with good intentions to get away for a trip or two over Christmas but things went a bit awry. The old launch had no holding tank so installing one was the first step to appease the boss for overnighting. A quick two or three hour job (after a bit of prior research and measuring) and we would be ready to go! About three days later after much cursing, squeezing (not the boss), unsticking stuck gate valves, leaks and so the job was done. Loaded up the family and



aimed for Waiheke in somewhat switchy winds and made it to Putiki Bay as that would be flat in whichever way the wind blew. Quite pleasant there and fairly quiet after new year so pottered about, walked the dog (it is amazing how often the dog needs a trip to the beach) and chilled for two days before toddling back to the big smoke. Managed a few day trips, not many fish and to enjoy the Gulf. Happy New Year to everyone, have a gas. (John Davies)

## CRUISING REPORTS

### FX's summer cruise

*FX* (Elliott 7.9) cruised at Great Barrier, Te Kouma and Waiheke for 19 days over two trips. We briefly saw *Pepe* and *Knighthawk* from a distance, and apparently we waved at John's dog.

**Grant's highlight:** Surfing down waves at 12.2 knots downwind on the way to Barrier, with just a reefed mainsail. It took us 7 hours to get from Westhaven to Port Fitzroy; it was pretty windy and with lumpy seas.

**Cornelia's highlight:** Grateful for the big dodger we've just bought. It's made a big difference to chillaxing in the cockpit, especially on a windy day. (And we had plenty of those!)

**What we learned the hard way:** That barnacles grow in the toilet wastewater pipe, and that cleaning it whilst cruising (when blocked) is a much worse job than doing it in the comfort of a marina berth when the holding tank is empty...! (Cornelia Luethi)



# WE ALL LEARN SOMETHING NEW...

---

*Morning Star* (Davidson 31) departed Westhaven in great anticipation of a festive night on Waiheke for New Year's Eve and 5 days of sailing bliss. Had a lovely SW breeze as we headed towards Waiheke. On anchor we met up with a friend with a jet ski. A speedy ride round a few bays and a few turns being towed around on a wake skate. We were fortunate enough to get a booking last minute, not only in the restaurant but out on the balcony of Vino restaurant. Back out on the boat and following the big hand striking midnight, the fireworks on Waiheke lasted a good 45 minutes which was spectacular.

Why is it breakages or mishaps happen whilst it rains and the wind blowing in the wrong direction? New Year's day we decided to head to the south end but the engine wouldn't start. The wind had changed to NE, bit of sea chop and directly into Oneroa. This is not convenient when the engine wouldn't start and also with a few yachts relatively nearby to make it more difficult to sail off anchor. We succeeded and managed to meander out of Oneroa in variable breeze. On clearing the rocks at the head of Oneroa we had time to try play with the motor. Our choices were turn left and sail home to Westhaven or right around Waiheke. We chose right... we found a corroded wire to the start engine. Pleased with ourselves, because we didn't fancy going back to Auckland at that stage we motored to Opopo Bay. Let the Coastguard know that we had succeeded to get the motor going and that we were heading to Opopo Bay and let them know of our arrival at the end of the day.

Upon anchoring we had a nice spot and the call was to cut the engine. The call came again... but it wasn't me skipper, the engine won't cut off. Sigh... here we go again. How do you shut off a diesel engine? SUFFOCATE IT!! Shove a book over the outlet until it dies. Following this incident it hasn't happened again to date.

We won't need to tell you about the wonders of the back end of Waiheke as we are sure many of you have discovered for yourselves. It was a new experience for us on *Morning Star* as we start to explore our huge back yard being the Hauraki Gulf, and it was a treat to share it with so many other boaties.

What we did discover and some may have been there recently is Rotoroa Island, now known as an Arts, Heritage and Conservation Park. In the 1950s the island was an alcohol and drug rehabilitation care facility. It is an award-winning museum and exhibition centre. For those that are not able to get there by boat, there is a ferry from Auckland to the Island. They have relatively new hostel style accommodation out there as well.



There is a \$5 landing fee payable at the exhibition centre and it was worth every penny. A newly constructed exhibition centre is situated on the east side of the island. It is obvious a few million dollars have been spent on the development. The building has even featured in an architecture magazine not so long ago. In addition to the exhibition centre it has stunning landscaping being done to create regenerating bush. The experience is heightened by being able to do some lovely and relatively easy walking tracks circumnavigating the island. The Rotoroa trust is starting to reintroduce native species to the island so no dogs are allowed on the island. [www.rotoroa.org.nz](http://www.rotoroa.org.nz)



The final few days we managed to fill with a few day sails and of course a lovely rose wine at Man O War Bay. The return home, *Morning Star* had the best sail yet. Heading home in a 12 knot NW, tiki-touring to check out the mansions on the water side, south end of Waiheke. As we rounded out of the passage hardened up a little and managed to get the boat clicking along at a pleasant 7 knots. We were not sure if the impeller was working properly, but it was a good gauge to see if we were speeding up or slowing down and the variation (well for me anyway). Checked the GPS on our phone and it was reading the same, brilliant!!

So what did we learn?

1. It takes two to turn on an engine, one to hold the wires together and one to turn it over.
2. Suffocate an engine by starving it of oxygen
3. Visit Rotoroa Island is a MUST SEE!!
4. Impeller is working!!
5. Having a good fridge/freezer is great, but not when your salad freezes. ☺



# GALLEY GOURMET

---

## Crayfish dips

If you're lucky enough to catch/be given/buy a crayfish, here are two finger-lickin' good dips to serve with them.

(Just boil the crayfish in salted water; chop them in half lengthways; mix the dips; and enjoy!)

### Sweet chilli dip

2 tbsp mayonnaise  
1 tbsp tomato ketchup  
2 tbsp sweet chilli sauce  
Juice of half a lime

### Lime aioli dip

4 tbsp mayonnaise  
2 garlic cloves – very finely chopped  
Juice of one lime



**Yum! Fresh crayfish tastes great served with a dipping sauce.**

# LIFEJACKETS: LAWS & BYLAWS

---

## **What the law says...**

Maritime NZ states that skippers must carry a correctly sized, serviceable lifejacket for each person on board a pleasure boat in New Zealand. This rule applies to all boats, including tenders and larger craft.

## **Regional bylaws can be stricter than Maritime NZ's rules**

However, regional council bylaws can be stricter than Maritime NZ's requirements. Councils can impose instant fines, or detain vessels for very serious offences. For more details see: <http://www.maritimenz.govt.nz/Recreational-Boating/Regional-safety-information/Regional-safety-information.asp>

## **Bylaws in action...**

Boating NZ magazine (November 2013 issue) reported that the members of a Townson cruising regatta were intercepted by a harbour official as they were heading ashore in their dinghies in Te Kouma, Coromandel. The Townson sailors had to get their buoyancy aids, or face a fine.

Indeed, the crew of *FX* spotted the Waikato Harbourmaster boat patrolling Te Kouma whilst cruising. It was a lovely calm day, with barely a breeze rippling the water, yet the three men on board the Harbourmaster boat were warning everyone in the bay to wear lifejackets when using their dinghies.

As for Auckland, councillors have passed the first stage of a new bylaw to make the wearing of lifejackets compulsory on boats less than 6m (with some exceptions). The recommendation will go to the governing body for approval before public comment in 2014. The bylaw is likely to come into effect in the summer of 2014-2015.



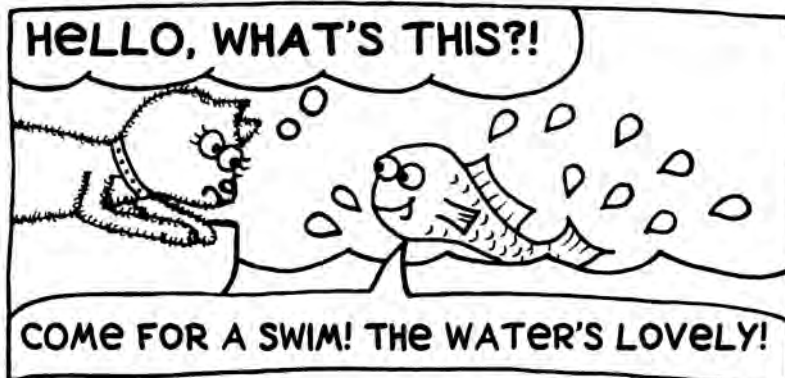
**The Waikato Harbourmaster patrolling Te Kouma, Coromandel, enforcing the local lifejacket bylaw. As seen by the crew of *FX* on their Christmas cruise.**

# CARTOON: SAILOR DOG VACATION

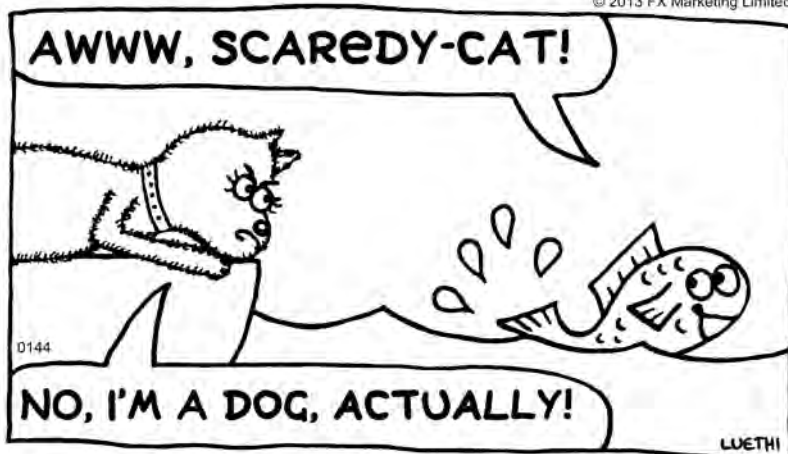
**Minnie THE Westie**   
Enjoy more cartoons: [www.MinnieTheWestie.com](http://www.MinnieTheWestie.com) BY CORNELIA LUETHI



[www.MinnieTheWestie.com](http://www.MinnieTheWestie.com)



© 2013 FX Marketing Limited



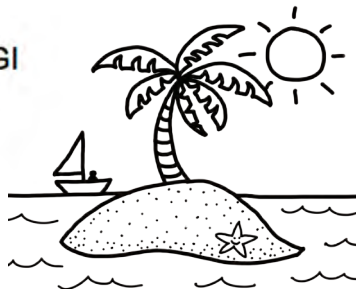
# WORD SEARCH

## Hauraki Gulf Islands (and beyond)

Words appear forwards, backwards, up and down, and diagonally.

M F K A W A U I I H I K A P L F E L  
R C Q K S R E I R R A B E L T T I L  
A C H A N N E L T E E A R B P D R Q  
K I O W E J K H K H P S R C J M O E  
I C Q I E G E U I A T O A U R K T I  
N N Q O C N P U P B W L S E Y S O M  
O K F J O I T O F N F E I R A U R O  
V S K I G O R Y S Q T R U O F A O T  
R X S N M O T A W A R C T H O N A U  
I E A H H A R H M A R A V Y T I L T  
S R Q U R U A I B E K P Z B A H M A  
O A T A O N A T M A G K F B T O J P  
U O N K G W A T P N K R Y R A K X U  
M G I A O E A A U A H A K U T O M T  
A A N C R E K V O E H J T Q O M J Y  
K U P G R V L N R A N G I T O T O V  
I I N G I Y V U O W J E K E H I A W  
T I R I T I R I M A T A N G I W Q J

BROWNS	PAKATOA
CALF	PAKIH
CHANNEL	RAKINO
COW	RANGIPUKEA
GREATBARRIER	RANGITOTO
GREATMERCURY	ROTOROA
KAIKOURA	TARANGA
KAWAU	THENOISES
LITTLEBARRIER	TIRITIRIMATANGI
MOKOHINAUS	WAIHEKE
MOTUHOROPAPA	WAIMATE
MOTUIHE	WHANGANUI
MOTUKAHAUA	
MOTUTAPU	
OTATA	





# CRC PRODUCT TIPS: DRY GLIDE

---

CRC has been a long-time supporter of Richmond Yacht Club, and provides hundreds of products for boat, car, home and industry... There's a lot more to CRC than the '66 Marine' spray we all know and love!



In the coming issues of Plain Sailing you'll discover tips and techniques on boat maintenance using CRC products. First up: discover Dry Glide...

## Sticky sails? How to make your sails easier to hoist...

Are your sails getting a bit hard to hoist? It's a common issue for sails to get 'stuck', as the sail track fills with salt, as well as general contaminants in the air (e.g. the black tyre dust that particularly coats boats at the Harbour Bridge end of Westhaven).

A quick squirt with CRC Dry Glide can work wonders to make your sails easy to hoist again.

### What is Dry Glide?

Dry Glide is a dry film lubricant, and provides long lasting lubrication where conventional wet film lubricants are difficult to apply or retain.

### How to use Dry Glide...

Simply spray Dry Glide onto your mainsail slides. The next time you hoist, things should be much smoother. If your mainsail still sticks, simply spray Dry Glide again.

**Hint:** Dry Glide can be used on mainsails with bolt rope systems too, but be aware that the luff of the sail may discolour a little after using Dry Glide. This is inevitable, as the product dislodges the salt and other dirt in the track that causes the sail to stick.



**Simply spray Dry Glide along the sail slides for a nice smooth hoist.**



# CREW TIP: THE PRE-START

---

## How to help with the pre-start

Getting a good start in a yacht race is a must; otherwise you'll spend the whole race playing catch-up. But getting that perfect position on the line takes a lot of skill – and perfect timing.



### How you, as crew, can help get the timing right

Even if the boat you crew on has a countdown timer on the instruments, or the skipper has a countdown timer on their watch, you can often play an important part in getting the timing right.

To do that, you need a watch with a countdown timer. Any countdown timer is fine, but a countdown timer specific to yacht racing makes life easier, as there are presets for the 5-minute and 10-minute warning signals. And a digital readout is easiest to use.

Cost-effective choices are from Ronstan (prices range from approx. \$95 to \$160), or else there's the Casio W753 (currently listed at approx. \$49 on TradeMe).

### Starting the timer

If you can start the timer at the 10-minute warning signal, that's perfect. (And remember, the flags take precedence over the sound signals, so keep an eye on the flag signals.) If you miss the 10-minute signal, get the 5-minute signal... failing that, the 4 or 1 minute signals.

### How to call out the countdown

Call out the time in a nice, clear loud voice, and just ignore other conversations that are going on. To start with, call out the time every 15 seconds... i.e. 10 minutes, 9.45, 9.30, 9.15, etc.

When you get to 2 minutes, call out every 10 seconds... i.e. 2 minutes, 1.50, 1.40, etc. Then from the last 20 seconds, count down every second. That's a good rule of thumb to start with – get feedback from your skipper to see what's best for them.

By calling out the countdown in this way, it doesn't just help the skipper, but it gets the rest of the crew in race mode too. And if you have another job to do on the boat as well, don't neglect that – that job comes first – the countdown callout is a very handy extra job that'll make you a valuable crew member.

# BITS AND BOBS: FROM THE OFFICE

---

## **RYC burgees**

Been cruising, and had flag envy? You can cure that with \$20: just bring your moolah to the office, and we'll give you a lovely RYC burgee you can hoist with pride.



## **Free RYC stickers**

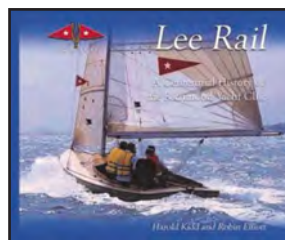
Not the flag flying type? You can still show the world that you're a Richmond Yacht Club supporter! Choose from car bumper stickers or decals for the transom of your boat - free for RYC members, just pop into the office and ask.

## **Racing flags**

Division flags of all colours are available from the RYC office - free for members.

## **Lee Rail**

Discover the rich centennial history of Richmond Yacht Club, as told by Harold Kidd and Robin Elliot in the book 'Lee Rail'. \$35 from the office.



## **Function bookings**

The RYC clubrooms are a fantastic function venue, complete with top quality audio-visual systems and plenty of free car parking... ideal for hosting seminars, corporate training events, weddings and other celebrations. Best of all, the million dollar views come for free! Speak to the office to find out more.

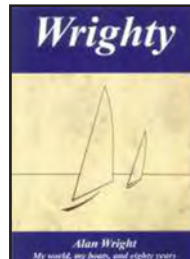
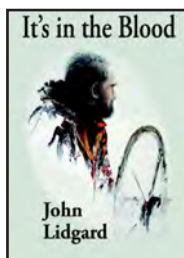
## **ISAF Racing Rules of Sailing Handbook 2013-2016**

The ISAF RRS 2013-2016 handbook is available from the Richmond Yacht Club Office for \$25. Or if you're an app kinda person, it's \$1.29 for iPhones and \$1.27 for Android.



## **Wrighty and It's in the Blood**

Signed copies of these books by NZ yacht designers Alan Wright and John Lidgard are available from the RYC office - \$40 each.



## ‘South Sea Vagabonds’ by John Wray

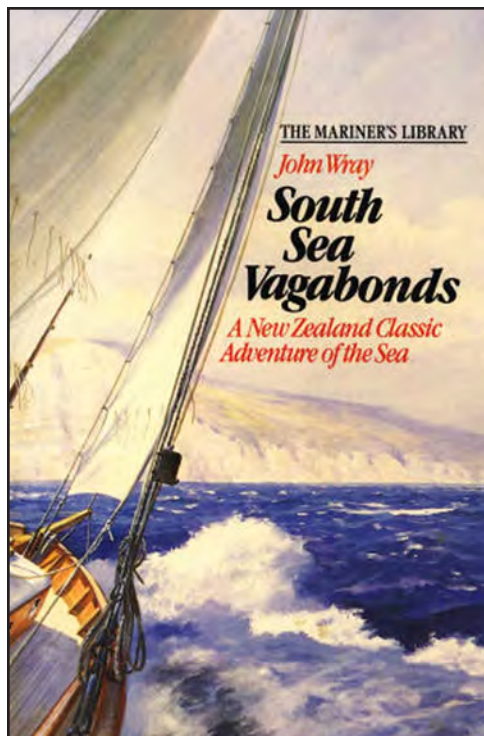
### A classic (and very humorous) Auckland sailing story

In the 1930s John Wray designed and built *Ngataki*, a 35-foot ocean-going sailing yacht. You might think there’s nothing unusual about that, but John only had £8 10s in cash and a motorbike worth £3. He realised that the only ways to get a yacht were to either buy one, build one, beg, borrow or steal one. Johnny Wray went for the ‘build one’ option, which he did at his parents’ home with kauri timbers he’d salvaged from around the Hauraki Gulf. (Locating and transporting these was an adventure in itself!)

A compass and (broken) sextant was all that was necessary for the boat to be deemed seaworthy, and laden with provisions, John and his crew set off on their first offshore cruise.

All went well, and *Ngataki*’s next voyage was the Trans-Tasman race to Melbourne. Sailing home, Johnny decided on a trip to Sunday Island – an uninhabited island 700 miles from Auckland – to pick up a cargo of delicious, juicy oranges that grew wild there. The sale of the oranges in Auckland would fund further sailing adventures... or so it was intended. Alas the crew consumed the entire cargo because it was so tasty!

‘South Sea Vagabonds’ is unfortunately out of print, but secondhand copies do turn up from time-to-time on TradeMe and AbeBooks.com. The book’s also available from Auckland Libraries. It’s worth hunting it out, it is an easy and very entertaining read.



### Where is *Ngataki* now?

*Ngataki* is currently being restored by the Tino Rawa Trust. Photos and details are here: [http://www.tinorawatrust.co.nz/TinoRawa\\_Trust/Ngataki.html](http://www.tinorawatrust.co.nz/TinoRawa_Trust/Ngataki.html)

# CLASSIFIEDS

---

## **Classifieds will be placed when requested - free for members!**

(And if you'd like to promote your business, speak to a friendly Committee member about sponsorship opportunities.)

### **For Sale Townson 32 Twilight - Pott Black**

\$42,000 ono. Built by Keith Atkinson in 1976. Double diagonal kauri, glassed.



New Lombardini 21hp diesel engine installed Dec 2005.  
Sails - 2x main both fully battened, No1, No2, No3, Jib, Storm Jib, Spinnaker, Gennaker (in sock).  
Anchor winch, winches - 4x sheet (2x self tailers), 2x halyard on mast, 1x outhaul on boom, Lectrasan, two burner gas stove with grill and oven, full boat cover, dinghy, autopilot, chart plotter, instruments - log, depth, wind, anchor and warps x2, dodger, boom tent, spare sail cover, lee cloths, boarding ladder

See Trademe listing: <http://www.trademe.co.nz/motors/boats-marine/yachts/keeler/>

[auction-668372221.htm](http://www.trademe.co.nz/auction-668372221.htm) or give Colin Hunt a call on 027 235 4683.

### **Berth for rent or purchase - Westhaven L35**

The owner of Westhaven L35, an unfingered westward facing 10m berth with ~2.5m at low springs and three bumpers, is looking to rent long term at \$380/month. Reasonable offers for purchase will also be considered, price by negotiation. For more info call Graham on 585-1375 or email [barkergl@ihug.co.nz](mailto:barkergl@ihug.co.nz)

**Safety at Sea**  
your dedicated safety supplier

**SALT**  
SEA AND LAND TRADE SERVICES

**COOL STORE  
CONSTRUCTION**

# CLUB INFORMATION

---

## Officers

President	Vera Mummery	<i>Nevenka</i>
Commodore	John Davies	<i>Crocodile</i>
Vice Commodore	Bryon Wright	<i>Revolution Blues</i>
Rear Commodore	Andrew Burr	
Treasurer	Audrey Cole	
Secretary	Margaret Harvey	<i>Knighthawk</i>
Club Manager	Tim Smedley	
Building Manager	Andrew Burr	

## General Committee

Alan Abram	<i>Eyelure</i>
Mark Becroft	<i>Maggie May</i>
Fleur Cox	
Linda de Vine	
Tony Evans	<i>Grenada</i>
Bill Farmer	
Hayden Griffiths	<i>Latitude</i>
Jono Lind	<i>Carpe Diem</i>
Hans Swete	<i>Transformer</i>
Evelien van Vliet	
Gareth Wells	<i>Wandering Star</i>

## Office Hours

Tuesday to Friday, 10am to 3pm

## Contact

Richmond Yacht Club, Inc.  
Westhaven Seawall  
PO Box 46-324, Herne Bay  
Auckland, New Zealand  
**Phone:** +64 9 376 4332  
**Fax:** +64 9 360 2379

**Email:** [info@richmondyc.org.nz](mailto:info@richmondyc.org.nz)

**Web:** [www.richmondyc.org.nz](http://www.richmondyc.org.nz)

**Facebook:** <https://www.facebook.com/RichmondYachtClub>

## Magazine

This is your magazine: please do share your stories!

Send your yachting yarns, nautical news and photos to Cornelia, the Editor of Plain Sailing: [magazine@richmondyc.org.nz](mailto:magazine@richmondyc.org.nz)

**New members are very welcome!** See the club's website or office for details.





Sender:  
 Richmond Yacht Club, Inc.  
 PO Box 46-324  
 Herne Bay  
 Auckland 1147

Our generous sponsors:



**NEW WORLD**

**Victoria Park**

**Birkenhead**



**SALT**  
 SEA AND LAND TRADE SERVICES

